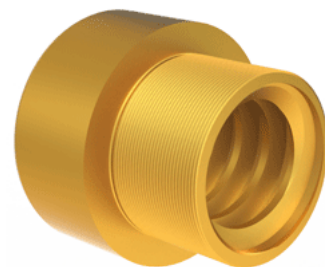


Bronze Trapezoidal Nut 20906

Call 800-321-7800 or visit us online at www.nookindustries.com to configure and order your Bronze Trapezoidal Nut 20906 today!



Product Info	
Part Number	20906
Thread Direction	RH
Type	Bronze
Details	
Diameter	55
Lead [mm]	12
Starts	1
Pitch [mm]	12
Lash (Maximum Axial in) [mm]	0.42
Nominal Rod Diameter	55
Thread Code	906
Dimensions	
B [mm]	75.0
C [mm]	80.0
E [mm]	25.00
F (n) Dia. [mm]	(4) 17.00
F BCD [mm]	112.00
G [mm]	26.0
H [mm]	142.0
J [mm]	M72x2
Forces and Torques	
Torque to Raise 1 kN [Nm]	5.131
Flange Part Numbers	
Flange Part Number	72006
Weight	
Flange Weight [kg]	2.20
Nut Weight [g]	1900
Performance Specifications	
Efficiency [%]	37
Lead Accuracy +/- [*MU*m/25mm]	6.25
Dynamic Load Capacity [N]	104287
Static Load Capacity [N]	333718