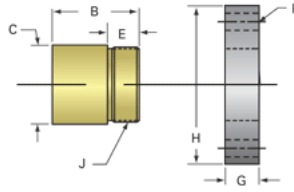
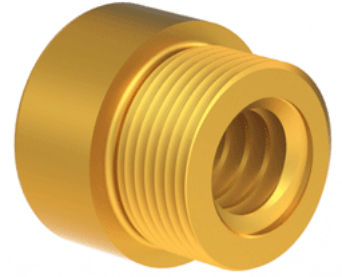


## Bronze Trapezoidal Nut 20902

Call 800-321-7800 or visit us online at [www.nookindustries.com](http://www.nookindustries.com) to configure and order your Bronze Trapezoidal Nut 20902 today!



<b>Product Info</b>	
Part Number	20902
Thread Direction	RH
Type	Bronze
<b>Details</b>	
Diameter	16
Lead [mm]	4
Starts	1
Pitch [mm]	4
Lash (Maximum Axial in) [mm]	0.24
Nominal Rod Diameter	16
Thread Code	902
<b>Dimensions</b>	
B [mm]	26.0
C [mm]	28.0
E [mm]	13.00
F (n) Dia. [mm]	(4) 7.00
F BCD [mm]	23.00
G [mm]	14.0
H [mm]	66.0
J [mm]	M25x1.5
<b>Forces and Torques</b>	
Torque to Raise 1 kN [Nm]	1.560
<b>Flange Part Numbers</b>	
Flange Part Number	72002
<b>Weight</b>	
Flange Weight [kg]	0.31
Nut Weight [g]	100
<b>Performance Specifications</b>	
Efficiency [%]	41
Lead Accuracy +/- [*MU*m/25mm]	6.25
Dynamic Load Capacity [N]	8825
Static Load Capacity [N]	28240