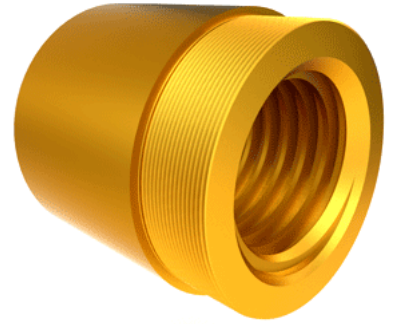


Bronze Acme Nut 5"-1 1/2 RH

Call 800-321-7800 or visit us online at www.nookindustries.com to configure and order your Bronze Acme Nut 5"-1 1/2 RH today!



Product Info	
Part Number	20552
Thread Direction	RH
Type	Bronze
Details	
Lead [in]	0.667
Starts	1
Pitch [in]	0.667
Turns Per Inch	1.5
Lash (Maximum Axial) [in]	0.022
Nominal Rod Diameter [in]	5.000
Threads per Inch	1.5
Thread Code	552
Form	2G
Dimensions	
B [in]	7.50
C [in]	7.50
E [in]	2.00
F (n) Dia. [in]	(8) 1.25
F BCD [in]	10.000
G [in]	2.02
H [in]	12.00
J [in]	7.066-8
Forces and Torques	
Torque to Raise 1 lb. [in-lb]	0.398
Flange Part Numbers	
Flange No-Lash Part Number	73552
Flange Part Number	75000
Weight	
Flange Weight [lb]	110.00
Nut Weight [lb]	60.59
Performance Specifications	
Efficiency [%]	26
Lead Accuracy +/- [in/in]	0.0006
Dynamic Load Capacity [lb]	145000
Static Load Capacity [lb]	470000