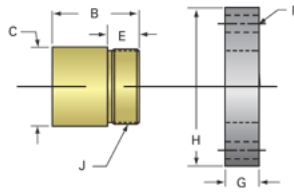
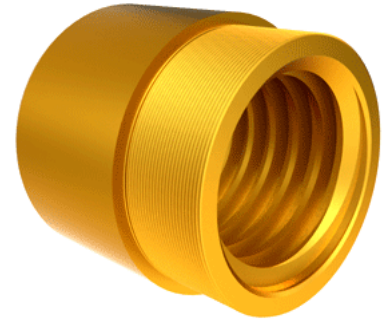


## Bronze Acme Nut 4 1/2"-1 1/2 RH

Call 800-321-7800 or visit us online at [www.nookindustries.com](http://www.nookindustries.com) to configure and order your Bronze Acme Nut 4 1/2"-1 1/2 RH today!



<b>Product Info</b>	
Part Number	20452
Thread Direction	RH
Type	Bronze
<b>Details</b>	
Lead [in]	0.667
Starts	1
Pitch [in]	0.667
Turns Per Inch	1.5
Lash (Maximum Axial) [in]	0.022
Nominal Rod Diameter [in]	4.500
Threads per Inch	1.5
Thread Code	452
Form	2G
<b>Dimensions</b>	
B [in]	5.50
C [in]	6.00
E [in]	2.00
F (n) Dia. [in]	(6) 1.03
F BCD [in]	8.000
G [in]	2.02
H [in]	9.75
J [in]	5.497-12
<b>Forces and Torques</b>	
Torque to Raise 1 lb. [in-lb]	0.379
<b>Flange Part Numbers</b>	
Flange No-Lash Part Number	73452
Flange Part Number	FLG3307
<b>Weight</b>	
Flange Weight [lb]	26.00
Nut Weight [lb]	25.82
<b>Performance Specifications</b>	
Efficiency [%]	28
Lead Accuracy +/- [in/in]	0.0006
Dynamic Load Capacity [lb]	100000
Static Load Capacity [lb]	320000