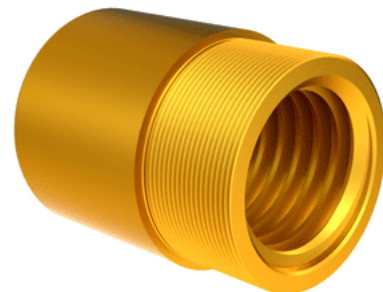


Bronze Acme Nut 2 1/2"-3 RH

Call 800-321-7800 or visit us online at www.nookindustries.com to configure and order your Bronze Acme Nut 2 1/2"-3 RH today!



Product Info

Part Number	20253
Thread Direction	RH
Type	Bronze

Details

Lead [in]	0.333
Starts	1
Pitch [in]	0.333
Turns Per Inch	3
Lash (Maximum Axial) [in]	0.013
Nominal Rod Diameter [in]	2.500
Threads per Inch	3
Thread Code	253
Form	2C

Dimensions

B [in]	4.25
C [in]	3.38
E [in]	1.56
F (n) Dia. [in]	(6) .656
F BCD [in]	4.380
G [in]	1.58
H [in]	5.38
J [in]	3.137-12

Forces and Torques

Torque to Raise 1 lb. [in-lb]	0.212
-------------------------------	-------

Flange Part Numbers

Flange No-Lash Part Number	73540
Flange Part Number	FLG7574

Weight

Flange Weight [lb]	9.88
Nut Weight [lb]	5.91

Performance Specifications

Efficiency [%]	25
Lead Accuracy +/- [in/in]	0.0003
Dynamic Load Capacity [lb]	31250
Static Load Capacity [lb]	100000