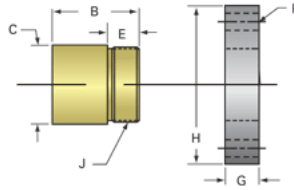
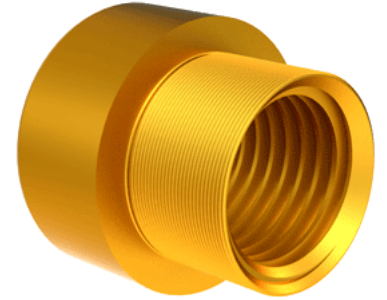


Bronze Acme Nut 2 1/4"-4 RH

Call 800-321-7800 or visit us online at www.nookindustries.com to configure and order your Bronze Acme Nut 2 1/4"-4 RH today!



Product Info	
Part Number	20224
Thread Direction	RH
Type	Bronze
Details	
Lead [in]	0.250
Starts	1
Pitch [in]	0.250
Turns Per Inch	4
Lash (Maximum Axial) [in]	0.012
Nominal Rod Diameter [in]	2.250
Threads per Inch	4
Thread Code	224
Form	2C
Dimensions	
B [in]	3.06
C [in]	3.38
E [in]	1.56
F (n) Dia. [in]	(6) .656
F BCD [in]	4.380
G [in]	1.58
H [in]	5.38
J [in]	3.137-12
Forces and Torques	
Torque to Raise 1 lb. [in-lb]	0.181
Flange Part Numbers	
Flange No-Lash Part Number	73540
Flange Part Number	FLG7574
Weight	
Flange Weight [lb]	9.88
Nut Weight [lb]	4.98
Performance Specifications	
Efficiency [%]	22
Lead Accuracy +/- [in/in]	0.0003
Dynamic Load Capacity [lb]	25312
Static Load Capacity [lb]	81000