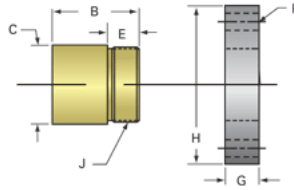
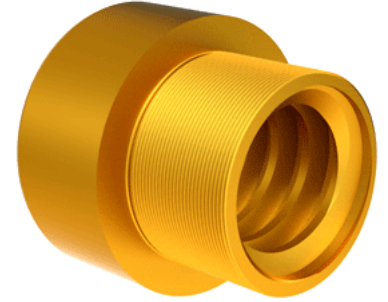


## Bronze Acme Nut 2 1/4"-2 RH

Call 800-321-7800 or visit us online at [www.nookindustries.com](http://www.nookindustries.com) to configure and order your Bronze Acme Nut 2 1/4"-2 RH today!



<b>Product Info</b>	
Part Number	20222
Thread Direction	RH
Type	Bronze
<b>Details</b>	
Lead [in]	0.500
Starts	1
Pitch [in]	0.500
Turns Per Inch	2
Lash (Maximum Axial) [in]	0.021
Nominal Rod Diameter [in]	2.250
Threads per Inch	2
Thread Code	222
Form	40
<b>Dimensions</b>	
B [in]	3.06
C [in]	3.38
E [in]	1.56
F (n) Dia. [in]	(6) .656
F BCD [in]	4.380
G [in]	1.58
H [in]	5.38
J [in]	3.137-12
<b>Forces and Torques</b>	
Torque to Raise 1 lb. [in-lb]	0.215
<b>Flange Part Numbers</b>	
Flange No-Lash Part Number	73540
Flange Part Number	FLG7574
<b>Weight</b>	
Flange Weight [lb]	9.88
Nut Weight [lb]	5.25
<b>Performance Specifications</b>	
Efficiency [%]	37
Lead Accuracy +/- [in/in]	0.0003
Dynamic Load Capacity [lb]	25312
Static Load Capacity [lb]	81000