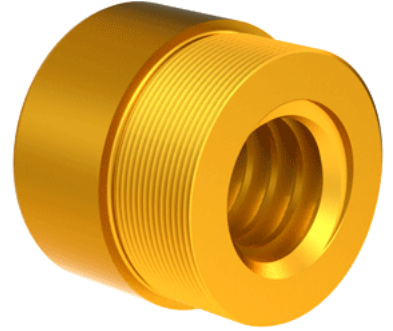


## Bronze Acme Nut 1 1/4"-4 LH

Call 800-321-7800 or visit us online at [www.nookindustries.com](http://www.nookindustries.com) to configure and order your Bronze Acme Nut 1 1/4"-4 LH today!



<b>Product Info</b>	
Part Number	80124
Thread Direction	LH
Type	Bronze
<b>Details</b>	
Lead [in]	0.250
Starts	1
Pitch [in]	0.250
Turns Per Inch	4
Lash (Maximum Axial) [in]	0.011
Nominal Rod Diameter [in]	1.250
Threads per Inch	4
Thread Code	124
Form	2C
<b>Dimensions</b>	
B [in]	1.75
C [in]	2.12
E [in]	0.81
F (n) Dia. [in]	(4) .397
F BCD [in]	3.440
G [in]	0.83
H [in]	4.20
J [in]	1.967-18
<b>Forces and Torques</b>	
Torque to Raise 1 lb. [in-lb]	0.117
<b>Flange Part Numbers</b>	
Flange No-Lash Part Number	73420
Flange Part Number	FLG7572
<b>Weight</b>	
Flange Weight [lb]	3.19
Nut Weight [lb]	1.32
<b>Performance Specifications</b>	
Efficiency [%]	34
Lead Accuracy +/- [in/in]	0.0003
Dynamic Load Capacity [lb]	7812
Static Load Capacity [lb]	25000