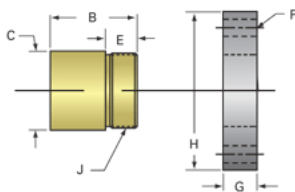
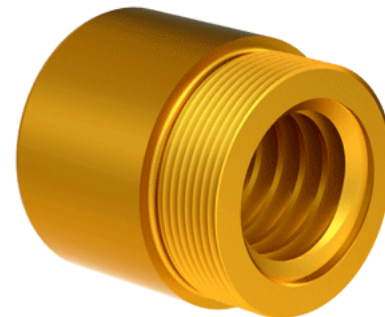


Bronze Acme Nut 1"-6 RH

Call 800-321-7800 or visit us online at www.nookindustries.com to configure and order your Bronze Acme Nut 1"-6 RH today!



Product Info	
Part Number	20106
Thread Direction	RH
Type	Bronze
Details	
Lead [in]	0.167
Starts	1
Pitch [in]	0.167
Turns Per Inch	6
Lash (Maximum Axial) [in]	0.009
Nominal Rod Diameter [in]	1.000
Threads per Inch	6
Thread Code	106
Form	2C
Dimensions	
B [in]	1.50
C [in]	1.50
E [in]	0.50
F (n) Dia. [in]	(4) .266
F BCD [in]	2.260
G [in]	0.52
H [in]	2.76
J [in]	1.375-16
Forces and Torques	
Torque to Raise 1 lb. [in-lb]	0.089
Flange Part Numbers	
Flange No-Lash Part Number	73275
Flange Part Number	FLG8281
Weight	
Flange Weight [lb]	0.85
Nut Weight [lb]	0.49
Performance Specifications	
Efficiency [%]	30
Lead Accuracy +/- [in/in]	0.0003
Dynamic Load Capacity [lb]	5000
Static Load Capacity [lb]	16000