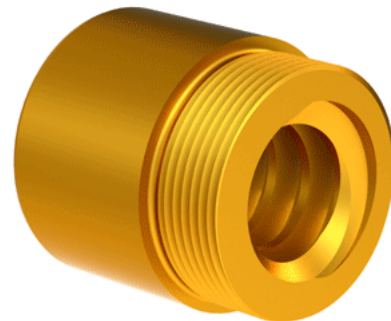


## Bronze Acme Nut 1"-4 LH

Call 800-321-7800 or visit us online at [www.nookindustries.com](http://www.nookindustries.com) to configure and order your Bronze Acme Nut 1"-4 LH today!



<b>Product Info</b>	
Part Number	80104
Thread Direction	LH
Type	Bronze
<b>Details</b>	
Lead [in]	0.250
Starts	1
Pitch [in]	0.250
Turns Per Inch	4
Lash (Maximum Axial) [in]	0.010
Nominal Rod Diameter [in]	1.000
Threads per Inch	4
Thread Code	104
Form	2C
<b>Dimensions</b>	
B [in]	1.50
C [in]	1.50
E [in]	0.50
F (n) Dia. [in]	(4) .266
F BCD [in]	2.260
G [in]	0.52
H [in]	2.76
J [in]	1.375-16
<b>Forces and Torques</b>	
Torque to Raise 1 lb. [in-lb]	0.105
<b>Flange Part Numbers</b>	
Flange No-Lash Part Number	73275
Flange Part Number	FLG8281
<b>Weight</b>	
Flange Weight [lb]	0.85
Nut Weight [lb]	0.52
<b>Performance Specifications</b>	
Efficiency [%]	38
Lead Accuracy +/- [in/in]	0.0003
Dynamic Load Capacity [lb]	5000
Static Load Capacity [lb]	16000