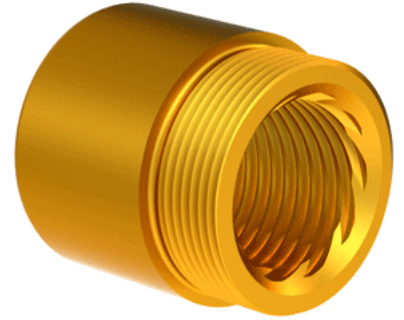
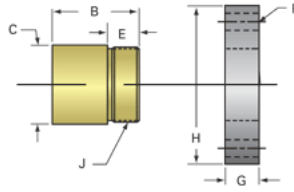


Bronze Acme Nut 1"-1 LH

Call 800-321-7800 or visit us online at www.nookindustries.com to configure and order your Bronze Acme Nut 1"-1 LH today!



Product Info

Part Number	80111
Thread Direction	LH
Type	Bronze

Details

Lead [in]	1.000
Starts	10
Pitch [in]	0.100
Turns Per Inch	1
Lash (Maximum Axial) [in]	0.008
Nominal Rod Diameter [in]	1.000
Threads per Inch	10
Thread Code	111
Form	Stub

Dimensions

B [in]	1.50
C [in]	1.50
E [in]	0.50
F (n) Dia. [in]	(4) .266
F BCD [in]	2.260
G [in]	0.52
H [in]	2.76
J [in]	1.375-16

Forces and Torques

Torque to Raise 1 lb. [in-lb]	0.231
-------------------------------	-------

Flange Part Numbers

Flange No-Lash Part Number	73275
Flange Part Number	FLG8281

Weight

Flange Weight [lb]	0.85
Nut Weight [lb]	0.46

Performance Specifications

Efficiency [%]	69
Lead Accuracy +/- [in/in]	0.0003
Dynamic Load Capacity [lb]	5000
Static Load Capacity [lb]	16000