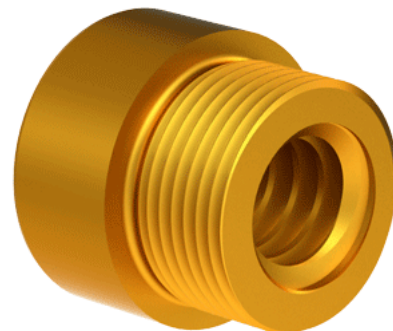
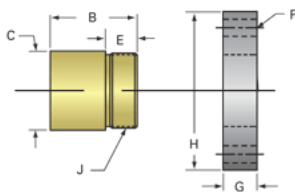


Bronze Acme Nut 5/8"-8 RH

Call 800-321-7800 or visit us online at www.nookindustries.com to configure and order your Bronze Acme Nut 5/8"-8 RH today!



Product Info

Part Number	20068
Thread Direction	RH
Type	Bronze

Details

Lead [in]	0.125
Starts	1
Pitch [in]	0.125
Turns Per Inch	8
Lash (Maximum Axial) [in]	0.008
Nominal Rod Diameter [in]	0.625
Threads per Inch	8
Thread Code	068
Form	2C

Dimensions

B [in]	1.00
C [in]	1.12
E [in]	0.50
F (n) Dia. [in]	(4) .266
F BCD [in]	2.090
G [in]	0.53
H [in]	2.60
J [in]	.937-16

Forces and Torques

Torque to Raise 1 lb. [in-lb]	0.058
-------------------------------	-------

Flange Part Numbers

Flange No-Lash Part Number	
Flange Part Number	FLG7570

Weight

Flange Weight [lb]	0.77
Nut Weight [lb]	0.22

Performance Specifications

Efficiency [%]	34
Lead Accuracy +/- [in/in]	0.0003
Dynamic Load Capacity [lb]	1953
Static Load Capacity [lb]	6250