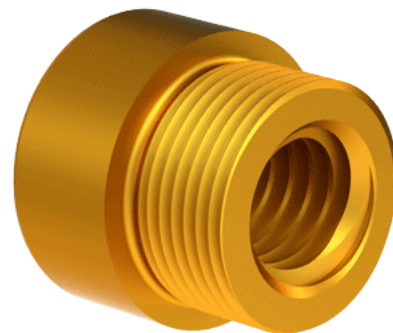
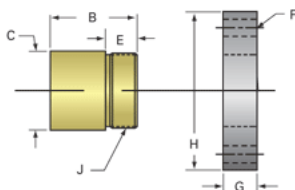


Bronze Acme Nut 5/8"-5 (2) RH

Call 800-321-7800 or visit us online at www.nookindustries.com to configure and order your Bronze Acme Nut 5/8"-5 (2) RH today!



Product Info

| | |
|------------------|--------|
| Part Number | 20652 |
| Thread Direction | RH |
| Type | Bronze |

Details

| | |
|---------------------------|-------|
| Lead [in] | 0.200 |
| Starts | 2 |
| Pitch [in] | 0.100 |
| Turns Per Inch | 5 |
| Lash (Maximum Axial) [in] | 0.009 |
| Nominal Rod Diameter [in] | 0.625 |
| Threads per Inch | 10 |
| Thread Code | 652 |
| Form | 2C |

Dimensions

| | |
|-----------------|----------|
| B [in] | 1.00 |
| C [in] | 1.13 |
| E [in] | 0.50 |
| F (n) Dia. [in] | (4) .266 |
| F BCD [in] | 2.091 |
| G [in] | 0.53 |
| H [in] | 2.60 |
| J [in] | .937-16 |

Forces and Torques

| | |
|-------------------------------|-------|
| Torque to Raise 1 lb. [in-lb] | 0.069 |
|-------------------------------|-------|

Flange Part Numbers

| | |
|----------------------------|---------|
| Flange No-Lash Part Number | |
| Flange Part Number | FLG7570 |

Weight

| | |
|--------------------|------|
| Flange Weight [lb] | 0.77 |
| Nut Weight [lb] | 0.22 |

Performance Specifications

| | |
|----------------------------|--------|
| Efficiency [%] | 46 |
| Lead Accuracy +/- [in/in] | 0.0003 |
| Dynamic Load Capacity [lb] | 1953 |
| Static Load Capacity [lb] | 6250 |