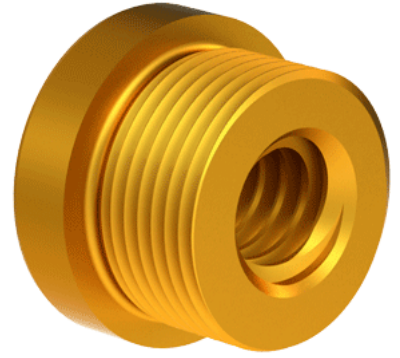
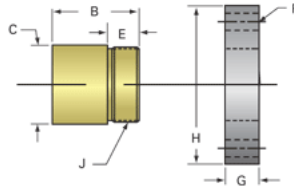


## Bronze Acme Nut 1/2"-5 RH

Call 800-321-7800 or visit us online at [www.nookindustries.com](http://www.nookindustries.com) to configure and order your Bronze Acme Nut 1/2"-5 RH today!



### Product Info

Part Number	20055
Thread Direction	RH
Type	Bronze

### Details

Lead [in]	0.200
Starts	2
Pitch [in]	0.100
Turns Per Inch	5
Lash (Maximum Axial) [in]	0.009
Nominal Rod Diameter [in]	0.500
Threads per Inch	10
Thread Code	055
Form	Stub

### Dimensions

B [in]	0.75
C [in]	1.12
E [in]	0.50
F (n) Dia. [in]	(4) .266
F BCD [in]	2.090
G [in]	0.53
H [in]	2.60
J [in]	.937-16

### Forces and Torques

Torque to Raise 1 lb. [in-lb]	0.061
-------------------------------	-------

### Flange Part Numbers

Flange No-Lash Part Number	
Flange Part Number	FLG7570

### Weight

Flange Weight [lb]	0.77
Nut Weight [lb]	0.18

### Performance Specifications

Efficiency [%]	52
Lead Accuracy +/- [in/in]	0.0003
Dynamic Load Capacity [lb]	1250
Static Load Capacity [lb]	4000