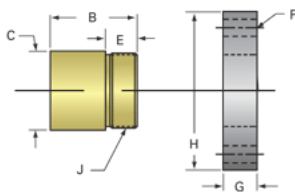
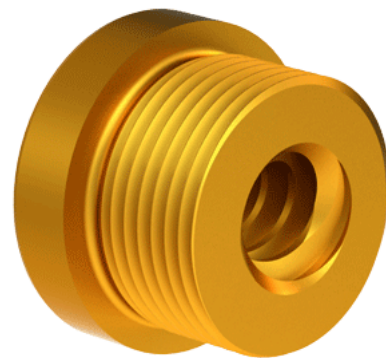


Bronze Acme Nut 1/2"-4 RH

Call 800-321-7800 or visit us online at www.nookindustries.com to configure and order your Bronze Acme Nut 1/2"-4 RH today!



Product Info	
Part Number	20054
Thread Direction	RH
Type	Bronze
Details	
Lead [in]	0.250
Starts	2
Pitch [in]	0.125
Turns Per Inch	4
Lash (Maximum Axial) [in]	0.007
Nominal Rod Diameter [in]	0.500
Threads per Inch	8
Thread Code	054
Form	2C
Dimensions	
B [in]	0.75
C [in]	1.12
E [in]	0.50
F (n) Dia. [in]	(4) .266
F BCD [in]	2.090
G [in]	0.53
H [in]	2.60
J [in]	.937-16
Forces and Torques	
Torque to Raise 1 lb. [in-lb]	0.070
Flange Part Numbers	
Flange No-Lash Part Number	
Flange Part Number	FLG7570
Weight	
Flange Weight [lb]	0.77
Nut Weight [lb]	0.19
Performance Specifications	
Efficiency [%]	57
Lead Accuracy +/- [in/in]	0.0003
Dynamic Load Capacity [lb]	1250
Static Load Capacity [lb]	4000