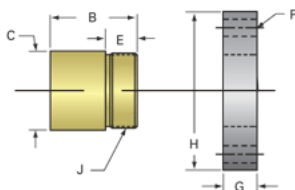
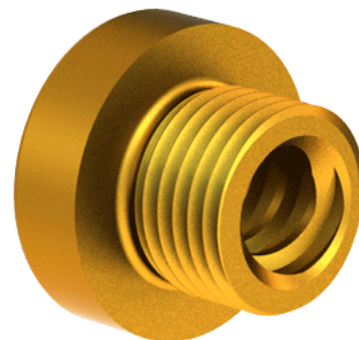


## Bronze Acme Nut3/8"-4 RH

Call 800-321-7800 or visit us online at [www.nookindustries.com](http://www.nookindustries.com) to configure and order your Bronze Acme Nut3/8"-4 RH today!



<b>Product Info</b>	
Part Number	20034
Thread Direction	RH
Type	Bronze
<b>Details</b>	
Lead [in]	0.250
Starts	2
Pitch [in]	0.125
Turns Per Inch	4
Lash (Maximum Axial) [in]	0.009
Nominal Rod Diameter [in]	0.375
Threads per Inch	8
Thread Code	034
Form	Stub
<b>Dimensions</b>	
B [in]	0.62
C [in]	0.68
E [in]	0.38
F (n) Dia. [in]	(4) .266
F BCD [in]	1.250
G [in]	0.41
H [in]	1.61
J [in]	.562-18
<b>Forces and Torques</b>	
Torque to Raise 1 lb. [in-lb]	0.063
<b>Flange Part Numbers</b>	
Flange No-Lash Part Number	
Flange Part Number	70160
<b>Weight</b>	
Flange Weight [lb]	0.23
Nut Weight [lb]	0.05
<b>Performance Specifications</b>	
Efficiency [%]	63
Lead Accuracy +/- [in/in]	0.0003
Dynamic Load Capacity [lb]	703
Static Load Capacity [lb]	2250