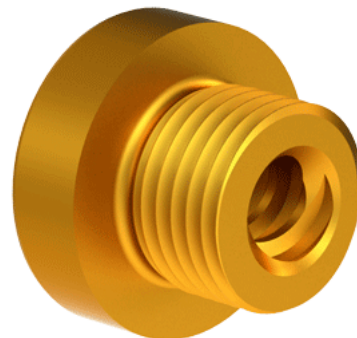
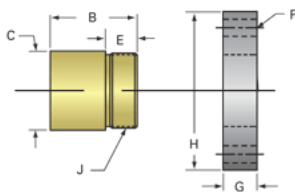


Bronze Acme Nut 5/16"-4 RH

Call 800-321-7800 or visit us online at www.nookindustries.com to configure and order your Bronze Acme Nut 5/16"-4 RH today!



Product Info

Part Number	20028
Thread Direction	RH
Type	Bronze

Details

Lead [in]	0.250
Starts	2
Pitch [in]	0.125
Turns Per Inch	4
Lash (Maximum Axial) [in]	0.008
Nominal Rod Diameter [in]	0.313
Threads per Inch	8
Thread Code	028
Form	Stub

Dimensions

B [in]	0.62
C [in]	0.68
E [in]	0.38
F (n) Dia. [in]	(4) .266
F BCD [in]	1.250
G [in]	0.41
H [in]	1.61
J [in]	.562-18

Forces and Torques

Torque to Raise 1 lb. [in-lb]	0.059
-------------------------------	-------

Flange Part Numbers

Flange No-Lash Part Number	
Flange Part Number	70160

Weight

Flange Weight [lb]	0.23
Nut Weight [lb]	0.05

Performance Specifications

Efficiency [%]	67
Lead Accuracy +/- [in/in]	0.0003
Dynamic Load Capacity [lb]	510
Static Load Capacity [lb]	1625