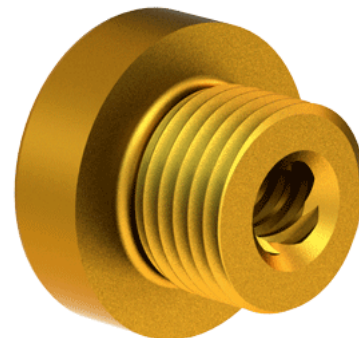
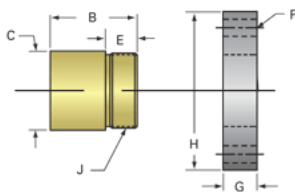


## Bronze Acme Nut 1/4"-3 RH

Call 800-321-7800 or visit us online at [www.nookindustries.com](http://www.nookindustries.com) to configure and order your Bronze Acme Nut 1/4"-3 RH today!



### Product Info

Part Number	20025
Thread Direction	RH
Type	Bronze

### Details

Lead [in]	0.333
Starts	4
Pitch [in]	0.083
Turns Per Inch	3
Lash (Maximum Axial) [in]	0.005
Nominal Rod Diameter [in]	0.250
Threads per Inch	12
Thread Code	025
Form	Stub

### Dimensions

B [in]	0.62
C [in]	0.68
E [in]	0.38
F (n) Dia. [in]	(4) .266
F BCD [in]	1.250
G [in]	0.41
H [in]	1.61
J [in]	.562-18

### Forces and Torques

Torque to Raise 1 lb. [in-lb]	0.073
-------------------------------	-------

### Flange Part Numbers

Flange No-Lash Part Number	
Flange Part Number	70160

### Weight

Flange Weight [lb]	0.23
Nut Weight [lb]	0.13

### Performance Specifications

Efficiency [%]	73
Lead Accuracy +/- [in/in]	0.0003
Dynamic Load Capacity [lb]	312
Static Load Capacity [lb]	1000