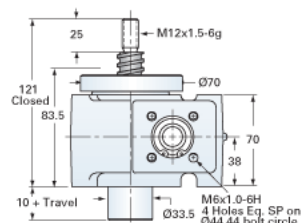
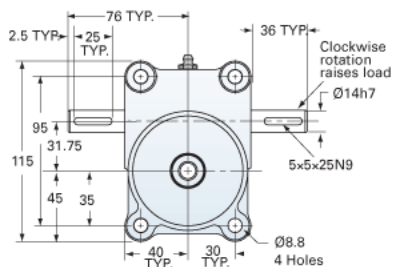
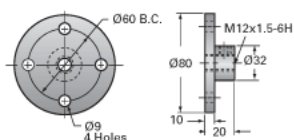


## ActionJac EM1-MSJ-U 5:1

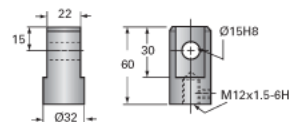
Call 800-321-7800 or visit us online at [www.nookindustries.com](http://www.nookindustries.com) to configure and order your ActionJac EM1-MSJ-U 5:1 today!



Top Plate (optional): 9000-EM-11



Clevis End (optional): 9001-EM-11



### Details

Capacity [kN]	10
Gear Ratio	5:1
Raise for One Turn of Worm [mm]	0.80
Torque to Raise 1 kN [Nm]	0.52
No Load Torque [Nm]	0.34
Lifting Screw Diameter [mm]	20
Screw Lead [mm]	4
Root Diameter [mm]	14.9

### Performance Specifications

Maximum Allowable Input [kW]	0.36
Maximum Input Torque [Nm]	5.19
Maximum Load at 1425 RPM [kN]	4.7
Maximum Worm Speed at Rated Load [rpm]	665
Starting Torque	2 x Running Torque

### Weight

Base 0 Travel [kg]	2.50
Per 100mm of Travel [kg]	0.19
Grease [kg]	0.23