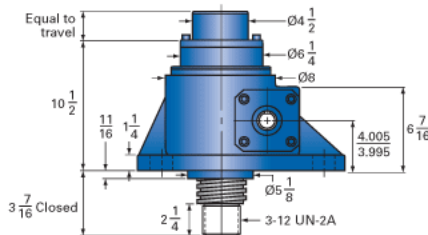
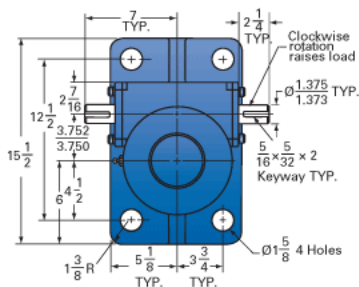
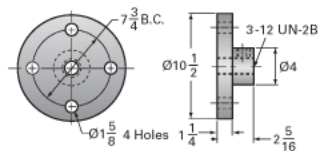


ActionJac 35-MSJ-IK 10 2/3:1

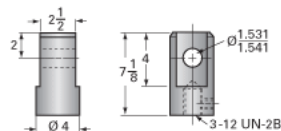
Call 800-321-7800 or visit us online at www.nookindustries.com to configure and order your ActionJac 35-MSJ-IK 10 2/3:1 today!



Top Plate (optional): 9000-00-13



Clevis End (optional): 9001-00-16



Details

Capacity [Ton]	35
Gear Ratio	10 2/3:1
Turns of Worm per Inch Travel	16
Torque to Raise 1 lb. [in-lb]	0.0570
Lifting Screw Diameter [in]	3.75
Screw Lead [in]	0.667
Root Diameter [in]	3.009
Tare Drag Torque [in-lb]	50

Performance Specifications

Maximum Allowable Input [hp]	11.00
Maximum Input Torque [in-lb]	3450
Maximum Worm Speed at Rated Load [rpm]	174
Maximum Load at 1750 RPM [lb]	6950
Starting Torque	2 x Running Torque

Weight

Base 0 Travel [lb]	145
Per Inch of Travel [lb]	3.40
Grease [lb]	3.5