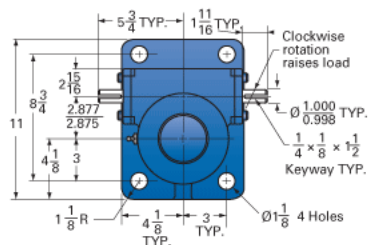
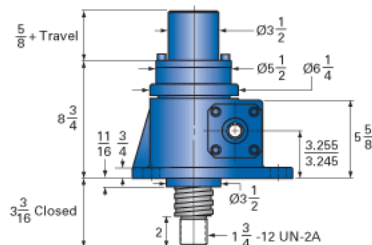
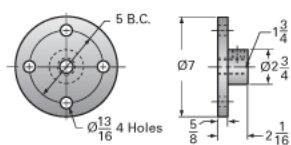


ActionJac 20-MSJ-IK 24:1

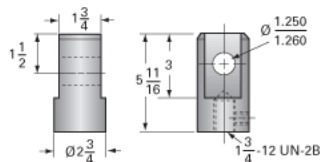
Call 800-321-7800 or visit us online at www.nookindustries.com to configure and order your ActionJac 20-MSJ-IK 24:1 today!



Top Plate (optional): 9000-00-06



Clevis End (optional): 9001-00-06



Details

Capacity [Ton]	20
Gear Ratio	24:1
Turns of Worm per Inch Travel	48
Torque to Raise 1 lb. [in-lb]	0.0251
Lifting Screw Diameter [in]	2.50
Screw Lead [in]	0.500
Root Diameter [in]	1.908
Tare Drag Torque [in-lb]	40

Performance Specifications

Maximum Allowable Input [hp]	2.50
Maximum Input Torque [in-lb]	873
Maximum Worm Speed at Rated Load [rpm]	157
Maximum Load at 1750 RPM [lb]	3587
Starting Torque	2 x Running Torque

Weight

Base 0 Travel [lb]	80
Per Inch of Travel [lb]	1.80
Grease [lb]	2.3