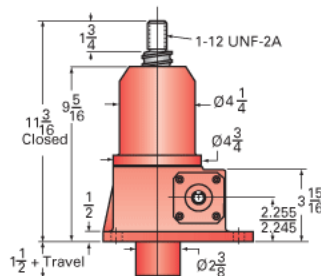
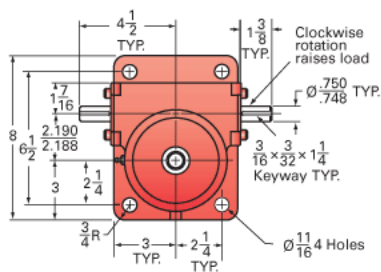
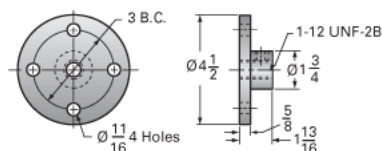


ActionJac 5-BSJ-U 24:1

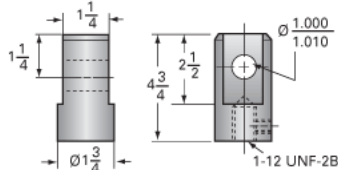
Call 800-321-7800 or visit us online at www.nookindustries.com to configure and order your ActionJac 5-BSJ-U 24:1 today!



Top Plate (optional): 9000-00-02



Clevis End (optional): 9001-00-02



Details

Capacity [Ton]	5
Gear Ratio	24:1
Turns of Worm per Inch Travel	50.66
Torque to Raise 1 lb. [in-lb]	0.0073
Lifting Screw Diameter [in]	1.50
Screw Lead [in]	0.473
Root Diameter [in]	1.140
BackDrive Holding Torque [ft-lb]	5
Tare Drag Torque [in-lb]	10

Performance Specifications

Maximum Allowable Input [hp]	0.75
Maximum Input Torque [in-lb]	73
Maximum Worm Speed at Rated Load [rpm]	647
Maximum Load at 1750 RPM [lb]	3700
Starting Torque	1.5 x Running Torque

Weight

Base 0 Travel [lb]	35
Per Inch of Travel [lb]	0.60
Grease [lb]	1.0