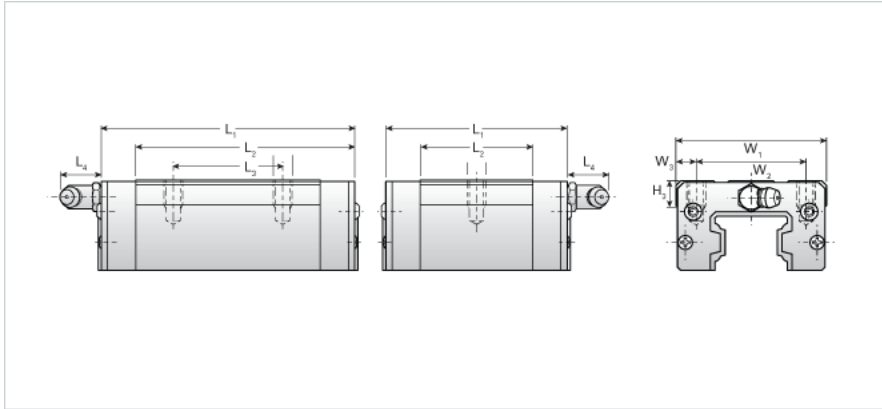
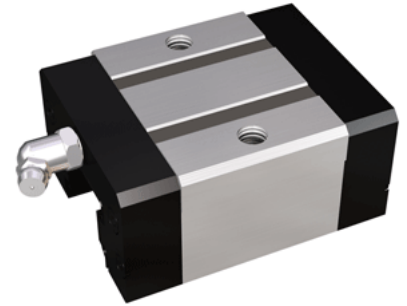


## NU35SER

Call 800-321-7800 or visit us online at [www.nookindustries.com](http://www.nookindustries.com) to configure and order your NU35SER today!



<b>Details</b>	
Size [mm]	35
<b>Dimensions</b>	
L1 [mm]	84
L2 [mm]	52
L4 [mm]	12
M1 x l	M8X12
H3 [mm]	10
W1 [mm]	70
W2 [mm]	50
W3 [mm]	10
<b>Forces and Torques</b>	
Basic Load Ratings C [kN]	28.92
Basic Load Ratings C [lbf]	6502
Basic Load Ratings C0 [kN]	39.71
Basic Load Ratings C0 [lbf]	8926
Static Moment Ratings-Ma [kN-m]	0.27
Static Moment Ratings-Ma [lb-in]	2430
Static Moment Ratings-Mb [kN-m]	0.27
Static Moment Ratings-Mb [lb-in]	2430
Static Moment Ratings-Mc [kN-m]	0.72
Static Moment Ratings-Mc [lb-in]	6336
<b>Weight</b>	
Weight-Block [kg]	0.84
<b>Grease Fitting</b>	
Grease Fitting Part Number	B-M6F