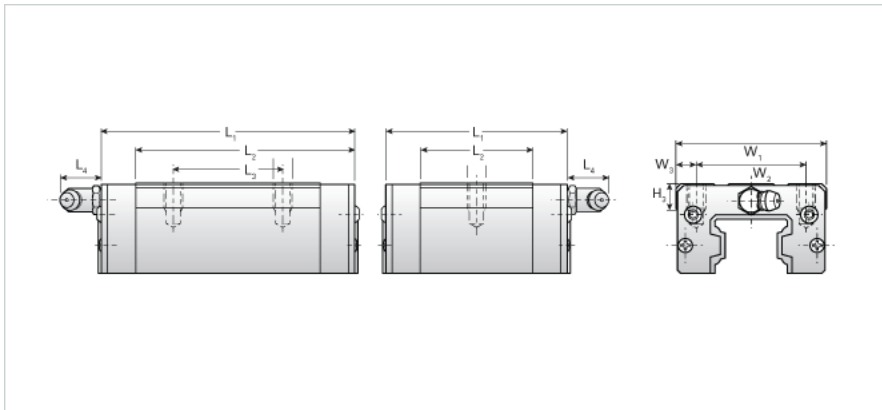
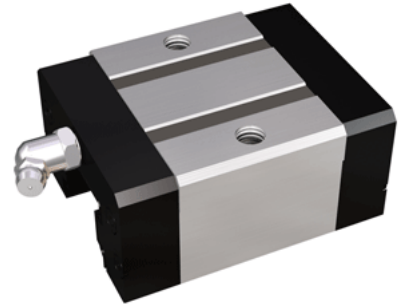


NU25SER

Call 800-321-7800 or visit us online at www.nookindustries.com to configure and order your NU25SER today!



Details	
Size [mm]	25
Dimensions	
L1 [mm]	60
L2 [mm]	36
L4 [mm]	12
M1 x l	M6X8
H3 [mm]	8
W1 [mm]	48
W2 [mm]	35
W3 [mm]	6.5
Forces and Torques	
Basic Load Ratings C [kN]	13.14
Basic Load Ratings C [lbf]	2953
Basic Load Ratings C0 [kN]	18.63
Basic Load Ratings C0 [lbf]	4187
Static Moment Ratings-Ma [kN-m]	0.09
Static Moment Ratings-Ma [lb-in]	781
Static Moment Ratings-Mb [kN-m]	0.09
Static Moment Ratings-Mb [lb-in]	781
Static Moment Ratings-Mc [kN-m]	0.23
Static Moment Ratings-Mc [lb-in]	1996
Weight	
Weight-Block [kg]	0.25
Grease Fitting	
Grease Fitting Part Number	B-M6F