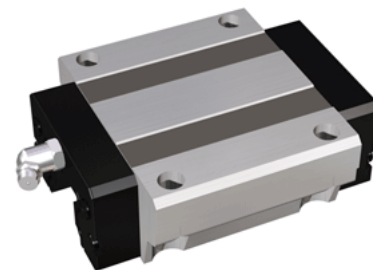


NH30EB

Call 800-321-7800 or visit us online at www.nookindustries.com to configure and order your NH30EB today!



| Details | |
|----------------------------------|-------|
| Size [mm] | 30 |
| Dimensions | |
| L1 [mm] | 97 |
| L2 [mm] | 68 |
| L3 [mm] | 52 |
| L4 [mm] | 12 |
| H3 [mm] | 13 |
| M1 [mm] | 9 |
| W1 [mm] | 90 |
| W2 [mm] | 72 |
| W3 [mm] | 9 |
| D1 [mm] | 9 |
| Forces and Torques | |
| Basic Load Ratings C [kN] | 28.24 |
| Basic Load Ratings C [lbf] | 6347 |
| Basic Load Ratings C0 [kN] | 46.87 |
| Basic Load Ratings C0 [lbf] | 10535 |
| Static Moment Ratings-Ma [kN-m] | 0.43 |
| Static Moment Ratings-Ma [lb-in] | 3819 |
| Static Moment Ratings-Mb [kN-m] | 0.43 |
| Static Moment Ratings-Mb [lb-in] | 3819 |
| Static Moment Ratings-Mc [kN-m] | 0.72 |
| Static Moment Ratings-Mc [lb-in] | 6336 |
| Weight | |
| Weight-Block [kg] | 1.80 |
| Grease Fitting | |
| Grease Fitting Part Number | B-M6F |