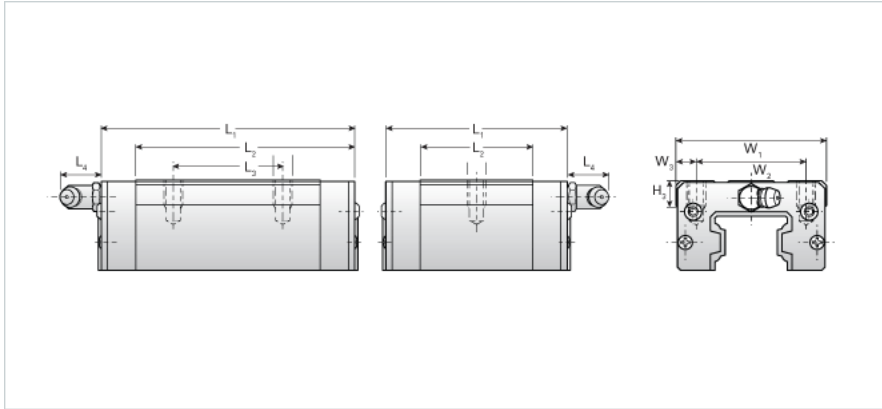
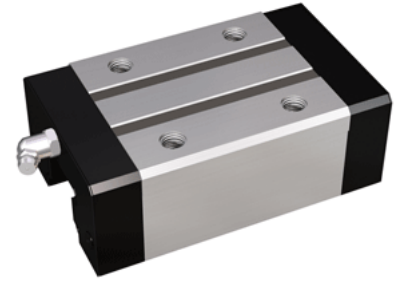


## NU30ER

Call 800-321-7800 or visit us online at [www.nookindustries.com](http://www.nookindustries.com) to configure and order your NU30ER today!



<b>Details</b>	
Size [mm]	30
<b>Dimensions</b>	
L1 [mm]	97
L2 [mm]	68
L3 [mm]	40
L4 [mm]	12
H3 [mm]	8
M1 x l	M8X10
W1 [mm]	60
W2 [mm]	40
W3 [mm]	10
<b>Forces and Torques</b>	
Basic Load Ratings C [kN]	28.24
Basic Load Ratings C [lbf]	6347
Basic Load Ratings C0 [kN]	46.86
Basic Load Ratings C0 [lbf]	10535
Static Moment Ratings-Ma [kN-m]	0.43
Static Moment Ratings-Ma [lb-in]	3819
Static Moment Ratings-Mb [kN-m]	0.43
Static Moment Ratings-Mb [lb-in]	3819
Static Moment Ratings-Mc [kN-m]	0.72
Static Moment Ratings-Mc [lb-in]	6336
<b>Weight</b>	
Weight-Block [kg]	0.90
<b>Grease Fitting</b>	
Grease Fitting Part Number	B-M6F