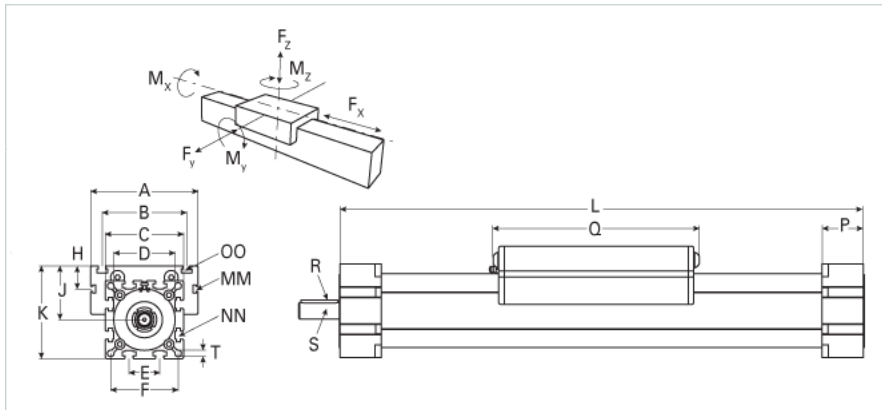
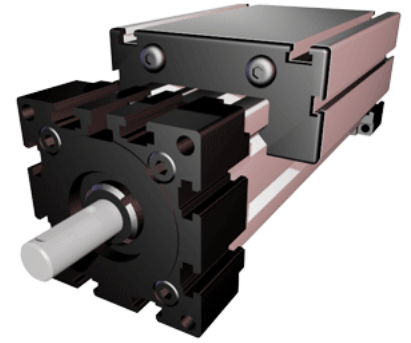


EGK 80

Call 800-321-7800 or visit us online at www.nookindustries.com to configure and order your EGK 80 today!



Details

| | |
|---------------|------------------|
| Size | 80 |
| Screw Options | 32x5/25x25/32x10 |
| Screw Type | Ball Screw |

Dimensions

| | |
|--------------------------|--------|
| Basic Length L [mm] | 285 |
| A [mm] | 140 |
| B [mm] | 110 |
| C [mm] | 102 |
| D [mm] | 80x1 |
| E [mm] | 40 |
| F [mm] | 88 |
| H [mm] | 30 |
| J [mm] | 70 |
| K [mm] | 121 |
| MM [mm] | M6 |
| NN [mm] | M10 |
| OO [mm] | M10 |
| P [mm] | 45 |
| Q [mm] | 193 |
| R [mm] | 6x6x40 |
| S Diameter x Length [mm] | 18x45 |
| T-Diameter [mm] | 8.5 |

Forces and Torques

| | |
|---------------------|------|
| No Load Torque [Nm] | 0.80 |
| Fx dynamic [N] | 3500 |
| Fy dynamic [N] | 900 |
| Fz dynamic [N] | 1000 |
| Mx dynamic [Nm] | 75 |
| My dynamic [Nm] | 200 |
| Mz dynamic [Nm] | 150 |
| Fx static [N] | 4200 |
| Fy static [N] | 1000 |
| Fz static [N] | 1125 |
| Mx static [Nm] | 82 |
| My static [Nm] | 220 |
| Mz static [Nm] | 165 |

Geometrical moments of inertia of aluminum profile

| | |
|--------------------------------------|---------|
| Elastic modulus [N/mm ²] | 70000 |
| Ix [mm ⁴] | 1914000 |
| Iy [mm ⁴] | 2012000 |

Weight

| | |
|-----------------------------------|------|
| Additional Weight per 100 mm [kg] | 1.14 |
| Basic Weight [kg] | 6.7 |