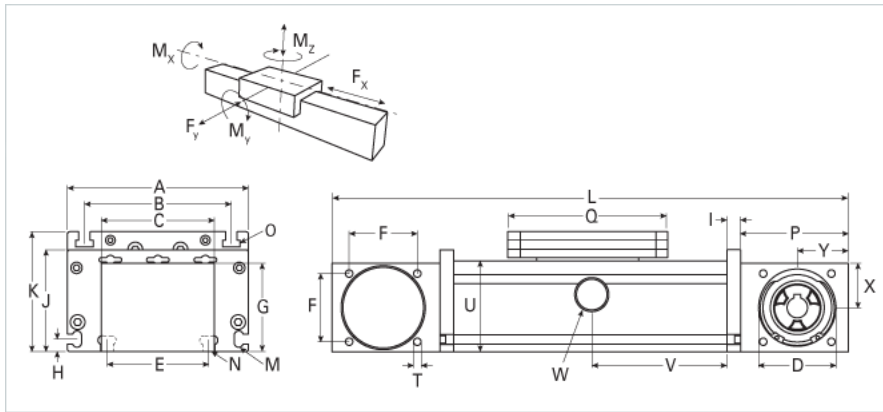
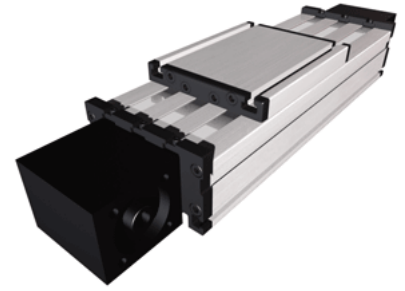


DLZ 200

Call 800-321-7800 or visit us online at www.nookindustries.com to configure and order your DLZ 200 today!



| Details | |
|---|-----------|
| Size | 200 |
| Belt | 8M50/8M70 |
| mm/Rev | 224 |
| Number of Teeth | 28 |
| Pully Diameter [mm] | 71.3 |
| Dimensions | |
| Basic Length L [mm] | 530 |
| A [mm] | 200 |
| B [mm] | 160 |
| C [mm] | 130 |
| D [mm] | 90 |
| E [mm] | 140 |
| F [mm] | 80 |
| G [mm] | 97 |
| H [mm] | 15 |
| I [mm] | 15 |
| J [mm] | 110 |
| K [mm] | 129 |
| M | M8 |
| N | M10 |
| O | M10 |
| P [mm] | 110 |
| Q [mm] | 270 |
| T | M10 |
| U [mm] | 100 |
| X [mm] | 49 |
| Y [mm] | 50 |
| Speed | |
| Speed Maximum [m/s] | 8 |
| Forces and Torques | |
| No-load torque [Nm] | 4 |
| Tensile force 0.2 sec [N] | 4300 |
| Tensile force permanent [N] | 4000 |
| Fx dynamic [N] | 3800 |
| Fy dynamic [N] | 3100 |
| Fz dynamic [N] | 4400 |
| Mx dynamic [Nm] | 510 |
| My dynamic [Nm] | 480 |
| Mz dynamic [Nm] | 275 |
| Fx static [N] | 4000 |
| Fy static [N] | 4400 |
| Fz static [N] | 4900 |
| Mx static [Nm] | 600 |
| My static [Nm] | 560 |
| Mz static [Nm] | 310 |
| Geometrical moments of inertia of aluminum profile | |
| Elastic modulus [N/mm ²] | 70000 |
| Ix [mm ⁴] | 6380000 |
| Iy [mm ⁴] | 33500000 |
| Weight | |
| Additional Weight per 100 mm [kg] | 2.33 |
| Basic Weight [kg] | 23.4 |