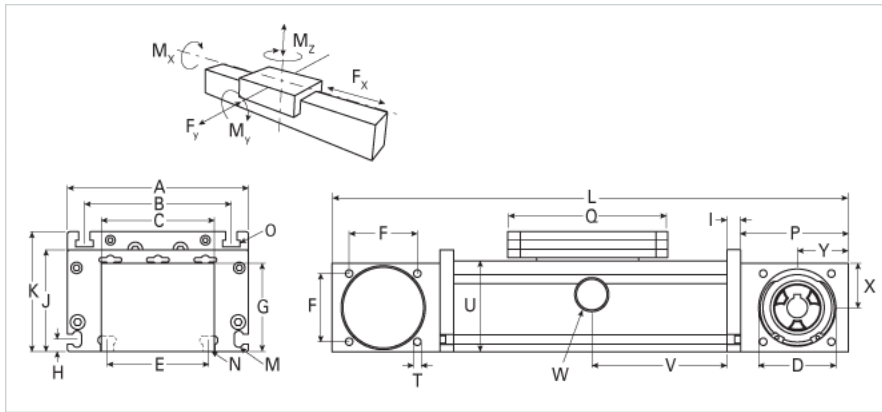
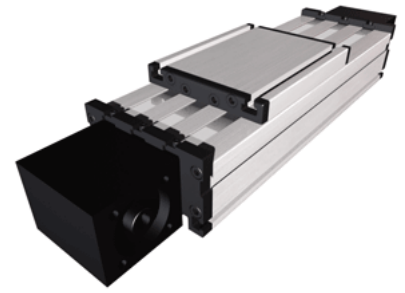


## DLZ 160

Call 800-321-7800 or visit us online at [www.nookindustries.com](http://www.nookindustries.com) to configure and order your DLZ 160 today!



| <b>Details</b>  |           |
|---|-----------|
| Size  | 160       |
| Belt  | 8M30/8M50 |
| mm/Rev  | 176       |
| Number of Teeth   | 22        |
| Pully Diameter [mm]                                       | 56.0      |
| <b>Dimensions</b>   |           |
| Basic Length L [mm]                                       | 440       |
| A [mm]  | 160       |
| B [mm]  | 130       |
| C [mm]  | 100       |
| D [mm]  | 68        |
| E [mm]  | 90        |
| F [mm]  | 60        |
| G [mm]  | 78        |
| H [mm]  | 11        |
| I [mm]  | 12        |
| J [mm]  | 90        |
| K [mm]  | 106       |
| M   | M6        |
| N   | M8        |
| O   | M8        |
| P [mm]  | 95        |
| Q [mm]  | 200       |
| T   | M8        |
| U [mm]  | 80        |
| X [mm]  | 39        |
| Y [mm]  | 45        |
| <b>Speed</b>  |           |
| Speed Maximum [m/s]                                       | 6         |
| <b>Forces and Torques</b>                                 |           |
| No-load torque [Nm]                                       | 3.8       |
| Tensile force 0.2 sec [N]                                 | 2090      |
| Tensile force permanent [N]                               | 1900      |
| Fx dynamic [N]  | 1800      |
| Fy dynamic [N]  | 2000      |
| Fz dynamic [N]  | 2800      |
| Mx dynamic [Nm]   | 320       |
| My dynamic [Nm]   | 300       |
| Mz dynamic [Nm]   | 150       |
| Fx static [N]   | 1900      |
| Fy static [N]   | 3000      |
| Fz static [N]   | 3500      |
| Mx static [Nm]  | 400       |
| My static [Nm]  | 360       |
| Mz static [Nm]  | 180       |
| <b>Geometrical moments of inertia of aluminum profile</b> |           |
| Elastic modulus [N/mm <sup>2</sup> ]                      | 70000     |
| Ix [mm <sup>4</sup> ]                                     | 2220000   |
| Iy [mm <sup>4</sup> ]                                     | 12200000  |
| <b>Weight</b>   |           |
| Additional Weight per 100 mm [kg]                         | 1.69      |
| Basic Weight [kg]   | 13.0      |