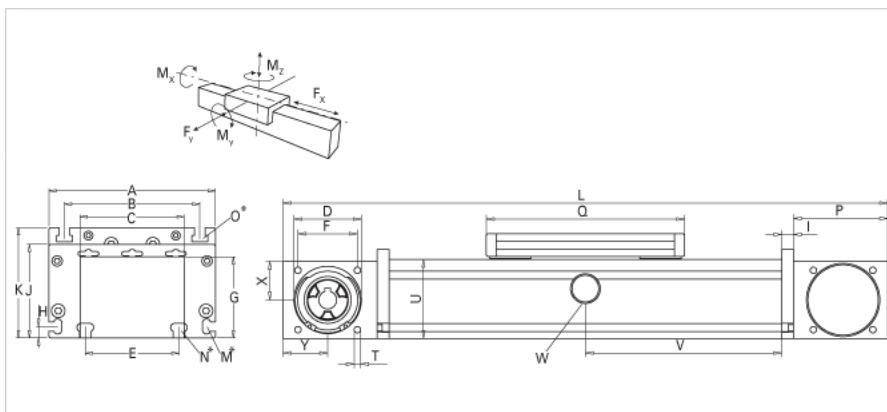
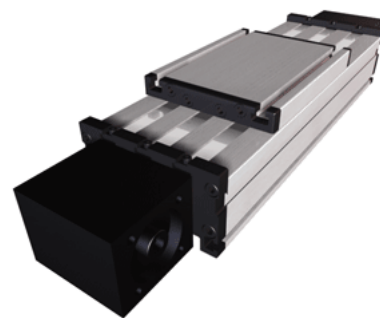


## DSZ 160

Call 800-321-7800 or visit us online at [www.nookindustries.com](http://www.nookindustries.com) to configure and order your DSZ 160 today!



<b>Details</b>	
Size	160
Belt	8M30/8M50
mm/Rev	176/224
Number of Teeth	22/28
Pully Diameter [mm]	56.0
<b>Dimensions</b>	
Basic Length L [mm]	440
A [mm]	160
B [mm]	130
C [mm]	100
D [mm]	68
E [mm]	90
F [mm]	60
G [mm]	78
H [mm]	11
I [mm]	12
J [mm]	90
K [mm]	106
M	M6
N	M8
O	M8
P [mm]	95
Q [mm]	200
T	M8
U [mm]	80
X [mm]	39
Y [mm]	45
<b>Speed</b>	
Speed Maximum [m/s]	5
<b>Forces and Torques</b>	
No-load torque with cover bands	2.1
No-load torque without cover bands	1.5
Fx [N] 10000 km	1800
Fy [N] 10000 km	3900
Fz [N] 10000 km	5020
Mx [Nm] 10000 km	255
My [Nm] 10000 km	262
Mz [Nm] 10000 km	258
Fx [N] 5000 km	1900
Fy [N] 5000 km	5570
Fz [N] 5000 km	7050
Mx [Nm] 5000 km	358
My [Nm] 5000 km	369
Mz [Nm] 5000 km	364
Tensile force 0.2 sec [N]	2090
Tensile force permanent [N]	1900
<b>Geometrical moments of inertia of aluminum profile</b>	
Elastic modulus [N/mm <sup>2</sup> ]	70000
Ix [mm <sup>4</sup> ]	2130000
Iy [mm <sup>4</sup> ]	12330000
<b>Weight</b>	
Additional Weight per 100 mm [kg]	1.90

