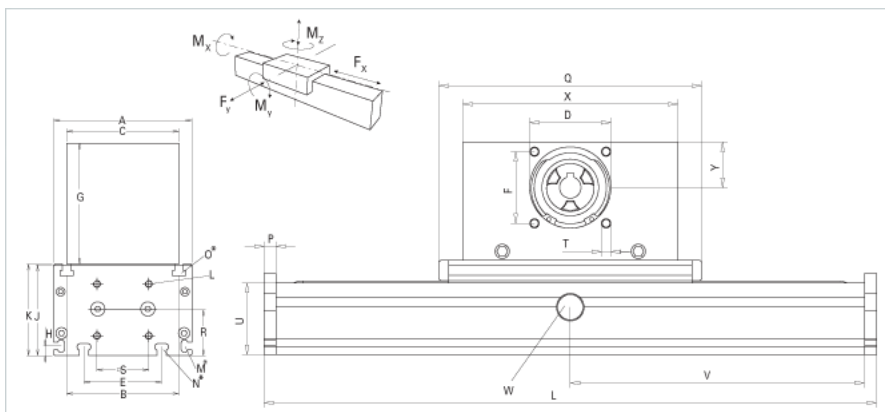
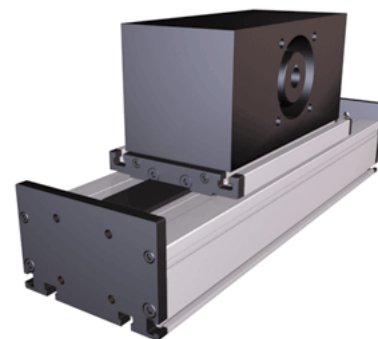


## DSSZ 200

Call 800-321-7800 or visit us online at [www.nookindustries.com](http://www.nookindustries.com) to configure and order your DSSZ 200 today!



| <b>Details</b>                                            |         |
|-----------------------------------------------------------|---------|
| Size                                                      | 200     |
| Belt                                                      | 8M70    |
| mm/Rev                                                    | 304     |
| Number of Teeth                                           | 38      |
| Pully Diameter [mm]                                       | 96.8    |
| <b>Dimensions</b>                                         |         |
| Basic Length L [mm]                                       | 380     |
| A [mm]                                                    | 200     |
| B [mm]                                                    | 160     |
| C [mm]                                                    | 160     |
| D [mm]                                                    | 110     |
| E [mm]                                                    | 140     |
| F [mm]                                                    | 100     |
| G [mm]                                                    | 145     |
| H [mm]                                                    | 15      |
| J [mm]                                                    | 128     |
| K [mm]                                                    | 129     |
| L [mm]                                                    | M10     |
| M                                                         | M8      |
| N                                                         | M10     |
| O                                                         | M10     |
| P [mm]                                                    | 15      |
| Q [mm]                                                    | 340     |
| R [mm]                                                    | 62.5    |
| S [mm]                                                    | 95      |
| T                                                         | M10     |
| U [mm]                                                    | 100     |
| X [mm]                                                    | 310     |
| Y [mm]                                                    | 62      |
| Shaft Diameter and Length [mm]                            | 30 x 55 |
| Key                                                       | 8x7x40  |
| <b>Speed</b>                                              |         |
| Speed Maximum [m/s]                                       | 5       |
| <b>Forces and Torques</b>                                 |         |
| Fx [N] 10000 km                                           | 5750    |
| Fy [N] 10000 km                                           | 11080   |
| Fz [N] 10000 km                                           | 14600   |
| Mx [Nm] 10000 km                                          | 915     |
| My [Nm] 10000 km                                          | 960     |
| Mz [Nm] 10000 km                                          | 960     |
| Fx [N] 5000 km                                            | 5900    |
| Fy [N] 5000 km                                            | 15600   |
| Fz [N] 5000 km                                            | 14600   |
| Mx [Nm] 5000 km                                           | 1285    |
| My [Nm] 5000 km                                           | 1375    |
| Mz [Nm] 5000 km                                           | 1345    |
| No-load torque [Nm]                                       | 2.2     |
| Tensile force 0.2 sec [N]                                 | 6350    |
| Tensile force permanent [N]                               | 5900    |
| <b>Geometrical moments of inertia of aluminum profile</b> |         |
| Elastic modulus [N/mm <sup>2</sup> ]                      | 70000   |
| Ix [mm <sup>4</sup> ]                                     | 4807000 |

|                                   |          |
|-----------------------------------|----------|
| ly [mm <sup>4</sup> ]             | 25999000 |
| <b>Weight</b>                     |          |
| Additional Weight per 100 mm [kg] | 2.60     |
| Basic Weight [kg]                 | 53.0     |