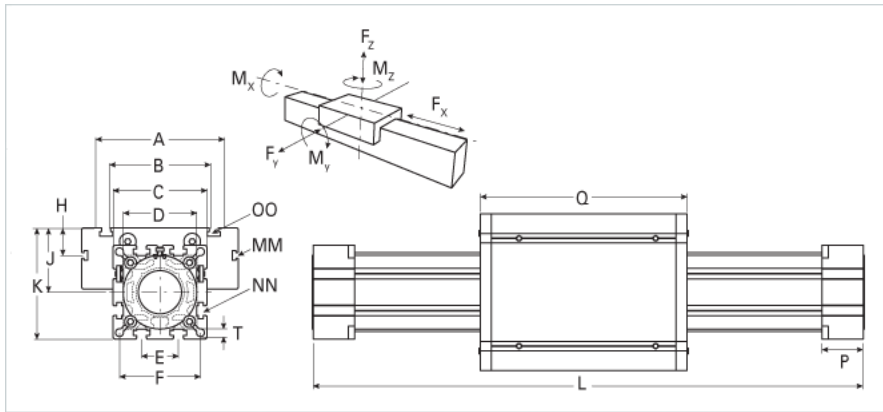
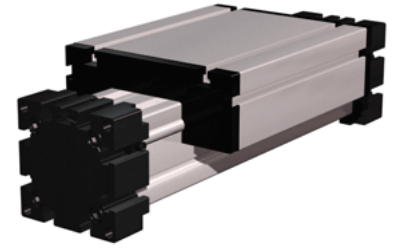


ELR 125

Call 800-321-7800 or visit us online at www.nookindustries.com to configure and order your ELR 125 today!



Details

Size

125

Dimensions

Basic Length L [mm]

510

A [mm]

295

B [mm]

200

C [mm]

165

D [mm]

130x1

E [mm]

60

F [mm]

142

G [mm]

-

H [mm]

30

K [mm]

190

MM

M10

NN

M12

OO

12

P [mm]

65

Q [mm]

365

T-Diameter [mm]

13.0

Forces and Torques

Fx dynamic [N]

-

Fy dynamic [N]

9000

Fz dynamic [N]

4500

Mx dynamic [Nm]

1450

My dynamic [Nm]

600

Mz dynamic [Nm]

1150

Fx static [N]

-

Fy static [N]

12000

Fz static [N]

6000

Mx static [Nm]

600

My static [Nm]

750

Mz static [Nm]

1350

No-load torque Maximum [m/s]

10

Geometrical moments of inertia of aluminum profile

Elastic modulus [N/mm²]

70000

Ix [mm⁴]

10200000

Iy [mm⁴]

10200000

Weight

Additional Weight per 100 mm [kg]

2.05

Basic Weight [kg]

26.8