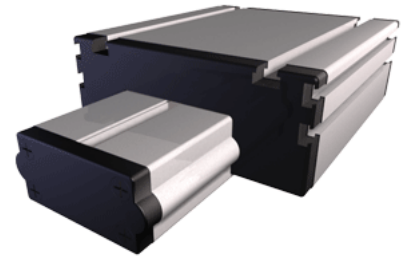
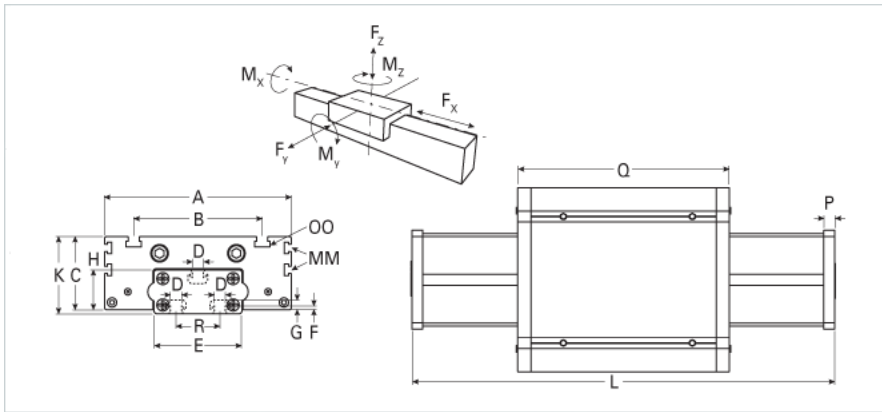


## E 80S

Call 800-321-7800 or visit us online at [www.nookindustries.com](http://www.nookindustries.com) to configure and order your E 80S today!



<b>Details</b>	
Size	80S
<b>Dimensions</b>	
Basic Length L [mm]	245
A [mm]	190
B [mm]	126
C [mm]	67.5
D [mm]	10
E [mm]	80
F [mm]	7
G [mm]	12.5
H [mm]	40
K [mm]	71
MM	M6
OO	M8
P [mm]	10
Q [mm]	214
R [mm]	40
<b>Speed</b>	
Speed Maximum [m/s]	8
<b>Forces and Torques</b>	
Fx dynamic [N]	-
Fy dynamic [N]	3600
Fz dynamic [N]	1800
Mx dynamic [Nm]	140
My dynamic [Nm]	230
Mz dynamic [Nm]	220
Fx static [N]	-
Fy static [N]	4600
Fz static [N]	3000
Mx static [Nm]	170
My static [Nm]	270
Mz static [Nm]	3000
<b>Geometrical moments of inertia of aluminum profile</b>	
Elastic modulus [N/mm <sup>2</sup> ]	70000
Ix [mm <sup>4</sup> ]	280000
Iy [mm <sup>4</sup> ]	1059000
<b>Weight</b>	
Additional Weight per 100 mm [kg]	0.48
Basic Weight [kg]	4.4