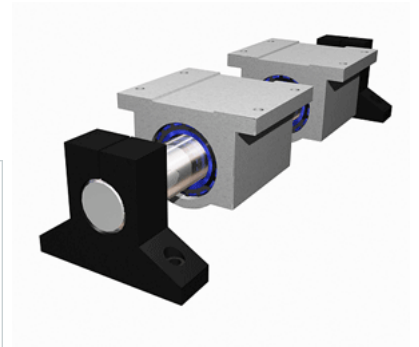
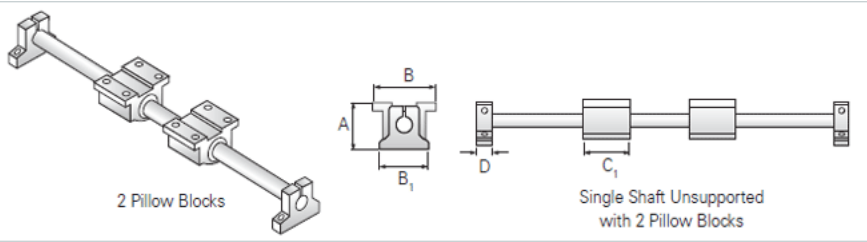


## PowerTrax 121-24-SXX

Call 800-321-7800 or visit us online at [www.nookindustries.com](http://www.nookindustries.com) to configure and order your PowerTrax 121-24-SXX today!



### Product Info

Nominal Shaft Diameter [in]	1.50
Pillow Block	XEP-24
End Support	NSB-24

### Dimensions

A +/-0.003 [in]	3.750
B [in]	4.75
B1 [in]	4.75
C1 [in]	4.00
D [in]	1.25

### Performance Specifications

Load Maximum/Block [lbf]	1376
--------------------------	------