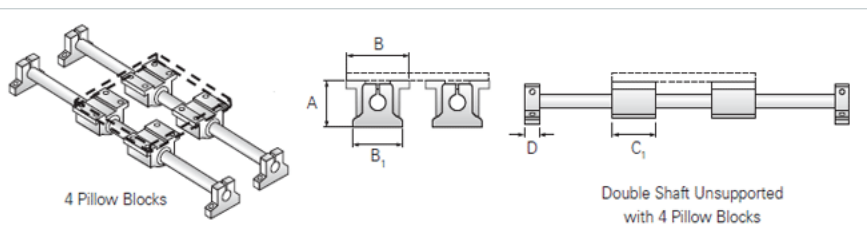
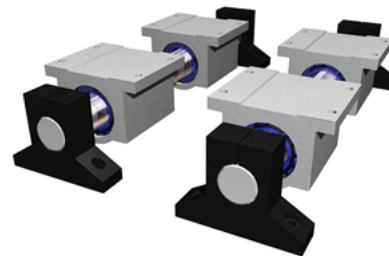


PowerTrax 122-24-SXX

Call 800-321-7800 or visit us online at www.nookindustries.com to configure and order your PowerTrax 122-24-SXX today!



Product Info

Nominal Shaft Diameter [in]	1.50
Pillow Block	XEP-24
End Support	NSB-24

Dimensions

A +/-0.003 [in]	3.750
B [in]	4.75
B1 [in]	4.75
C1 [in]	4.00
D [in]	1.25

Performance Specifications

Load Maximum/Block [lbf]	1376
Load Maximum/System [lbf]	5504