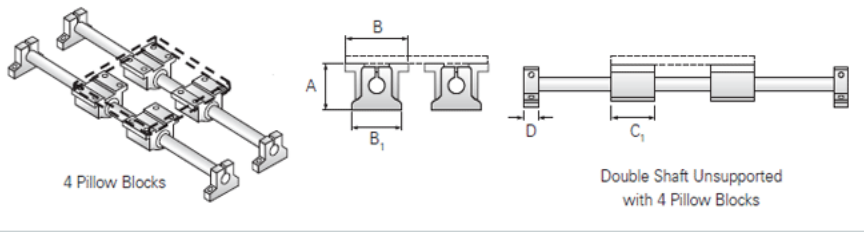
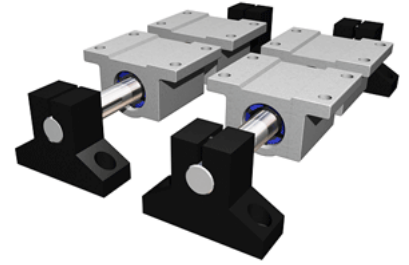


PowerTrax 122-06-SXX

Call 800-321-7800 or visit us online at www.nookindustries.com to configure and order your PowerTrax 122-06-SXX today!



Product Info

Nominal Shaft Diameter [in]	0.38
Pillow Block	XEP-6
End Support	NSB-6

Dimensions

A +/-0.003 [in]	1.250
B [in]	1.75
B1 [in]	1.63
C1 [in]	1.31
D [in]	0.56

Performance Specifications

Load Maximum/Block [lbf]	68
Load Maximum/System [lbf]	272