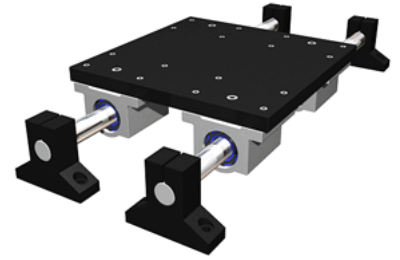
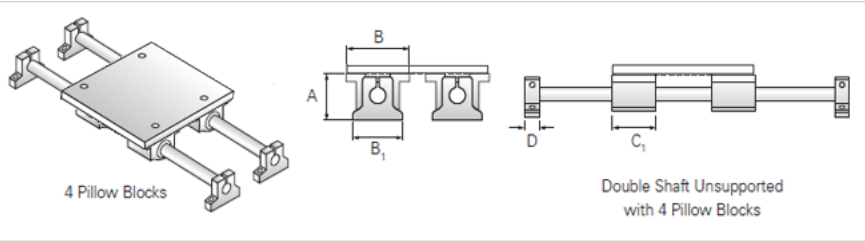


PowerTrax 123-08-SXX

Call 800-321-7800 or visit us online at www.nookindustries.com to configure and order your PowerTrax 123-08-SXX today!



Product Info

Nominal Shaft Diameter [in]	0.50
Pillow Block	XEP-8
End Support	NSB-8

Dimensions

A +/-0.001 [in]	1.687
B1 [in]	2.00
B2 [in]	3.25
C1 [in]	1.69
D [in]	0.63

Performance Specifications

Load Maximum/System [lbf]	700
---------------------------	-----