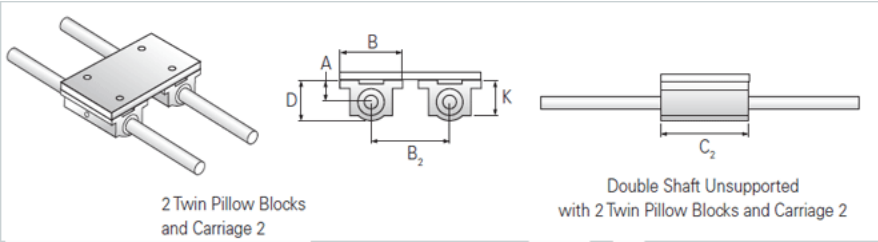
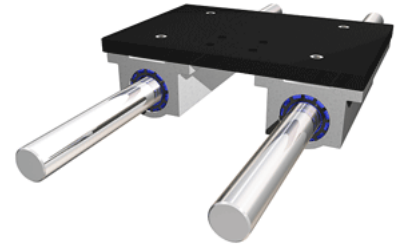


PowerTrax 113-16-TXX

Call 800-321-7800 or visit us online at www.nookindustries.com to configure and order your PowerTrax 113-16-TXX today!



Product Info

Nominal Shaft Diameter [in]	1.00
Pillow Block	TEP-16

Dimensions

A +/-0.001 [in]	1.187
B [in]	3.25
B2 [in]	5.50
C2 [in]	6.00
D [in]	2.19

Performance Specifications

Load Maximum/System [lbf]	2900
---------------------------	------