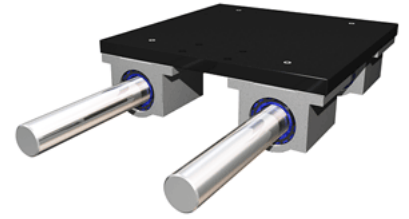
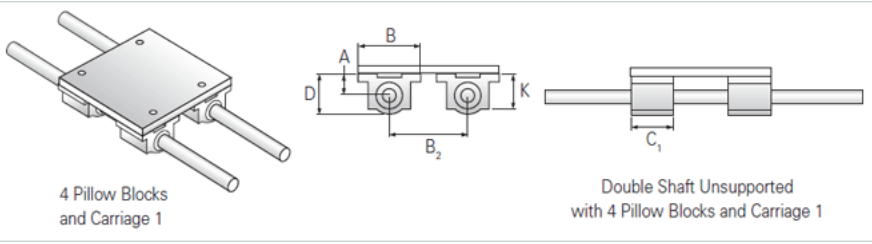


## PowerTrax 113-24-SXX

Call 800-321-7800 or visit us online at [www.nookindustries.com](http://www.nookindustries.com) to configure and order your PowerTrax 113-24-SXX today!



### Product Info

Nominal Shaft Diameter [in]	1.50
Pillow Block	XEP-24

### Dimensions

A +/-0.001 [in]	1.750
B [in]	4.750
B2 [in]	8.00
C1 [in]	4.00
D [in]	3.25

### Performance Specifications

Load Maximum/System [lbf]	5504
---------------------------	------