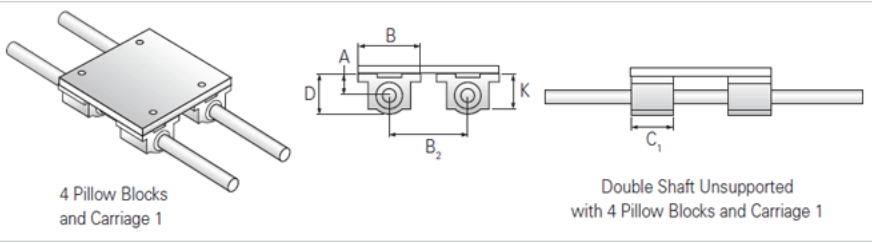
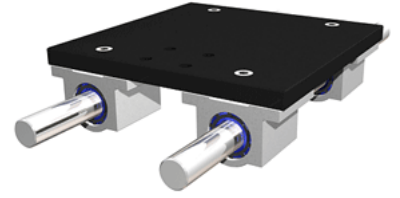


## PowerTrax 113-12-SXX

Call 800-321-7800 or visit us online at [www.nookindustries.com](http://www.nookindustries.com) to configure and order your PowerTrax 113-12-SXX today!



### Product Info

Nominal Shaft Diameter [in]	0.75
Pillow Block	XEP-12

### Dimensions

A +/-0.001 [in]	0.937
B [in]	2.750
B2 [in]	4.50
C1 [in]	2.06
D [in]	1.75

### Performance Specifications

Load Maximum/System [lbf]	1624
---------------------------	------