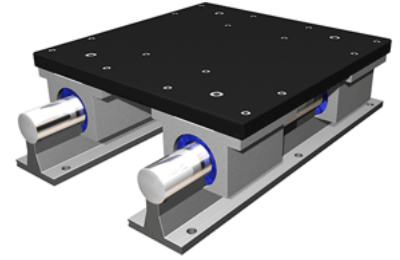
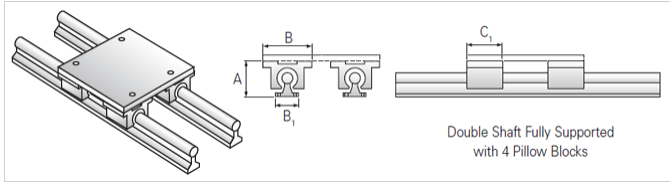


## PowerTrax 133-24-SXX

Call 800-321-7800 or visit us online at [www.nookindustries.com](http://www.nookindustries.com) to configure and order your PowerTrax 133-24-SXX today!



### Product Info

Nominal Shaft Diameter [in]	1.50
Pillow Block	XEP-24-OPN

### Dimensions

A +/-0.003 [in]	4.250
B1 [in]	3.00
B2 [in]	8.00
C1 [in]	3.75

### Performance Specifications

Load Maximum/Block [lbf]	5384
--------------------------	------