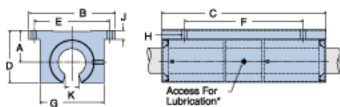
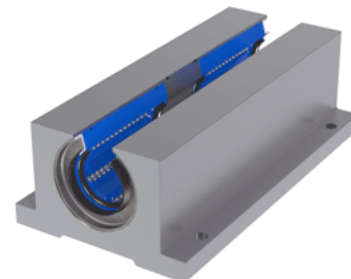


Excel TEP-16-OPN

Call 800-321-7800 or visit us online at www.nookindustries.com to configure and order your Excel TEP-16-OPN today!



* Lubrication holes for blocks up to 1/2" have flush lube fitting; 5/8" and above are 1/4 - 28 tapped hole with set screw

Product Info

| | |
|-----------------------------|------------|
| Nominal Shaft Diameter [in] | 1 |
| Part Number | TEP-16-OPN |

Dimensions

| | |
|-----------------|---------|
| A +/-0.001 [in] | 1.187 |
| B [in] | 3 1/4 |
| C [in] | 6 |
| D [in] | 1 47/50 |
| E +/-0.005 [in] | 2.875 |
| F +/-0.005 [in] | 4.500 |
| G [in] | 2 3/8 |
| J [in] | 3/8 |
| K [in] | 9/16 |
| H - Bolt | #10 |
| H - Hole [in] | 0.22 |

Weight

| | |
|-------------|---|
| Weight [lb] | 2 |
|-------------|---|

Performance Specifications

| | |
|---------------------------|------|
| Dynamic Load Maximum [lb] | 1422 |
| Dynamic Load Normal [lb] | 1380 |
| Static Load Maximum [lb] | 1122 |
| Static Load Normal [lb] | 1002 |