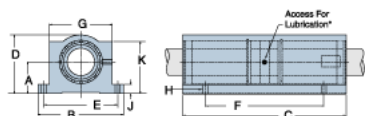
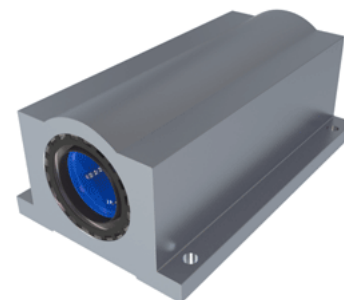


## Excel TEP-32

Call 800-321-7800 or visit us online at [www.nookindustries.com](http://www.nookindustries.com) to configure and order your Excel TEP-32 today!



\* Lubrication holes for blocks up to 1/2" have flush lube fitting; 5/8" and above are 1/4 - 28 tapped hole with set screw

### Product Info

Nominal Shaft Diameter [in]	2
Part Number	TEP-32

### Dimensions

A +/-0.001 [in]	2.125
B [in]	6
C [in]	10
D [in]	4 1/16
E +/-0.005 [in]	5.250
F +/-0.005 [in]	8.250
G [in]	4 1/2
J [in]	5/8
K [in]	3 5/8
H - Bolt	3/8"
H - Hole [in]	0.41

### Weight

Weight [lb]	14.5
-------------	------

### Performance Specifications

Dynamic Load Maximum [lb]	4460
Dynamic Load Normal [lb]	4208
Static Load Maximum [lb]	3732
Static Load Normal [lb]	2916