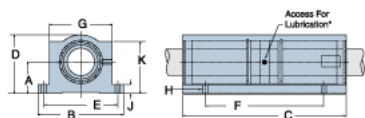
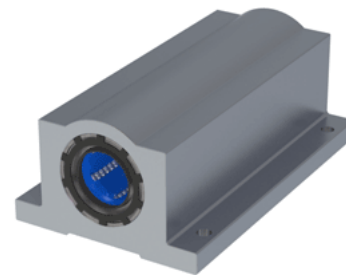


## Excel TEP-12

Call 800-321-7800 or visit us online at [www.nookindustries.com](http://www.nookindustries.com) to configure and order your Excel TEP-12 today!



\* Lubrication holes for blocks up to 1/2" have flush lube fitting; 5/8" and above are 1/4 - 28 tapped hole with set screw

### Product Info

Nominal Shaft Diameter [in]	3/4
Part Number	TEP-12

### Dimensions

A +/-0.001 [in]	0.937
B [in]	2 3/4
C [in]	4 1/2
D [in]	1 3/4
E +/-0.005 [in]	2.375
F +/-0.005 [in]	3.500
G [in]	1 7/8
J [in]	5/16
K [in]	1 9/16
H - Bolt	#8
H - Hole [in]	0.19

### Weight

Weight [lb]	1.2
-------------	-----

### Performance Specifications

Dynamic Load Maximum [lb]	812
Dynamic Load Normal [lb]	766
Static Load Maximum [lb]	702
Static Load Normal [lb]	548