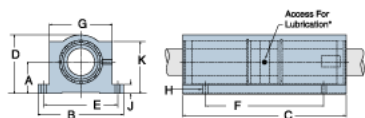
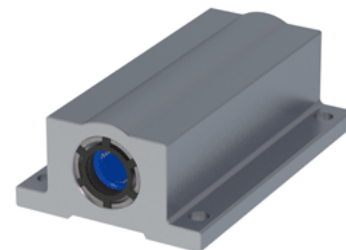


Excel TEP-06

Call 800-321-7800 or visit us online at www.nookindustries.com to configure and order your Excel TEP-06 today!



* Lubrication holes for blocks up to 1/2" have flush lube fitting; 5/8" and above are 1/4 - 28 tapped hole with set screw

Product Info

Nominal Shaft Diameter [in]	3/8
Part Number	TEP-06

Dimensions

A +/-0.001 [in]	0.500
B [in]	1 3/4
C [in]	2 3/4
D [in]	15/16
E +/-0.005 [in]	1.137
F +/-0.005 [in]	2.250
G [in]	1 1/8
J [in]	3/16
K [in]	7/8
H - Bolt	#6
H - Hole [in]	0.17

Weight

Weight [lb]	0.25
-------------	------

Performance Specifications

Dynamic Load Maximum [lb]	136
Dynamic Load Normal [lb]	118
Static Load Maximum [lb]	122
Static Load Normal [lb]	86