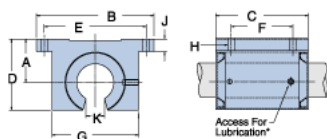
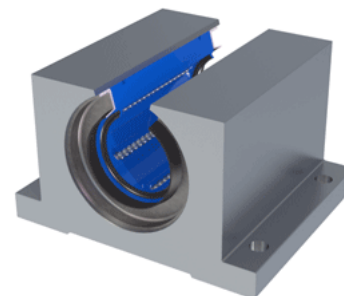


Excel XEP-32-OPN

Call 800-321-7800 or visit us online at www.nookindustries.com to configure and order your Excel XEP-32-OPN today!



* Lubrication holes for blocks up to 1/2" have flush lube fitting; 5/8" and above are 1/4" - 28 tapped hole with set screw

Product Info

Nominal Shaft Diameter [in]	2
Part Number	XEP-32-OPN

Dimensions

A +/-0.001 [in]	2.125
B [in]	6
C [in]	4 3/4
D [in]	3 5/8
E +/-0.005 [in]	5.250
F +/-0.005 [in]	3.250
G [in]	4 1/2
J [in]	5/8
K [in]	1
H - Bolt	3/8"
H - Hole [in]	0.41

Weight

Weight [lb]	6
-------------	---

Performance Specifications

Dynamic Load Maximum [lb]	2185
Dynamic Load Normal [lb]	2121
Static Load Maximum [lb]	1663
Static Load Normal [lb]	1485