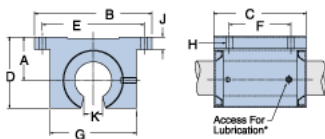
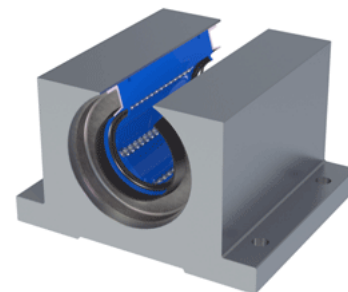


Excel XEP-24-OPN

Call 800-321-7800 or visit us online at www.nookindustries.com to configure and order your Excel XEP-24-OPN today!



* Lubrication holes for blocks up to 1/2" have flush lube fitting; 5/8" and above are 1/4" - 28 tapped hole with set screw

Product Info

Nominal Shaft Diameter [in]	1 1/2
Part Number	XEP-24-OPN

Dimensions

A +/-0.001 [in]	1.750
B [in]	4 3/4
C [in]	3 3/4
D [in]	2 7/8
E +/-0.005 [in]	4.125
F +/-0.005 [in]	2.500
G [in]	3 1/2
J [in]	1/2
K [in]	3/4
H - Bolt	1/4"
H - Hole [in]	0.28

Weight

Weight [lb]	3.2
-------------	-----

Performance Specifications

Dynamic Load Maximum [lb]	1346
Dynamic Load Normal [lb]	1307
Static Load Maximum [lb]	971
Static Load Normal [lb]	867