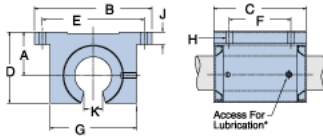
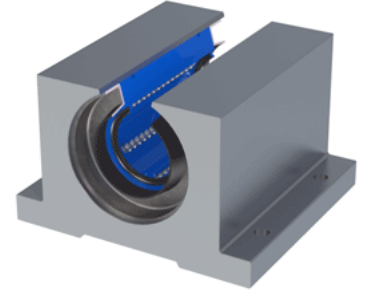


Excel XEP-20-OPN

Call 800-321-7800 or visit us online at www.nookindustries.com to configure and order your Excel XEP-20-OPN today!



* Lubrication holes for blocks up to 1/2" have flush lube fitting; 5/8" and above are 1/4 - 28 tapped hole with set screw

Product Info

Nominal Shaft Diameter [in]	1 1/4
Part Number	XEP-20-OPN

Dimensions

A +/-0.001 [in]	1.500
B [in]	4
C [in]	3 3/8
D [in]	2 1/2
E +/-0.005 [in]	3.500
F +/-0.005 [in]	2.000
G [in]	3
J [in]	7/16
K [in]	5/8
H - Bolt	#10
H - Hole [in]	0.22

Weight

Weight [lb]	2.1
-------------	-----

Performance Specifications

Dynamic Load Maximum [lb]	1056
Dynamic Load Normal [lb]	1025
Static Load Maximum [lb]	813
Static Load Normal [lb]	726