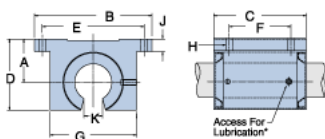
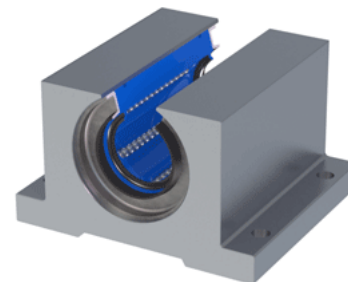


## Excel XEP-16-OPN

Call 800-321-7800 or visit us online at [www.nookindustries.com](http://www.nookindustries.com) to configure and order your Excel XEP-16-OPN today!



\* Lubrication holes for blocks up to 1/2" have flush lube fitting; 5/8" and above are 1/4" - 28 tapped hole with set screw

### Product Info

Nominal Shaft Diameter [in]	1
Part Number	XEP-16-OPN

### Dimensions

A +/-0.001 [in]	1.187
B [in]	3 1/4
C [in]	2 5/8
D [in]	1 15/16
E +/-0.005 [in]	2.875
F +/-0.005 [in]	1.750
G [in]	2 3/8
J [in]	3/8
K [in]	9/16
H - Bolt	#10
H - Hole [in]	0.22

### Weight

Weight [lb]	1
-------------	---

### Performance Specifications

Dynamic Load Maximum [lb]	711
Dynamic Load Normal [lb]	690
Static Load Maximum [lb]	561
Static Load Normal [lb]	501