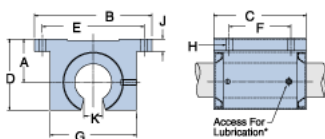
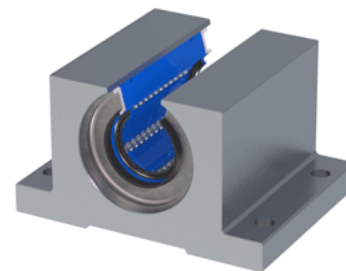


Excel XEP-12-OPN

Call 800-321-7800 or visit us online at www.nookindustries.com to configure and order your Excel XEP-12-OPN today!



* Lubrication holes for blocks up to 1/2" have flush lube fitting; 5/8" and above are 1/4" - 28 tapped hole with set screw

Product Info

| | |
|-----------------------------|------------|
| Nominal Shaft Diameter [in] | 3/4 |
| Part Number | XEP-12-OPN |

Dimensions

| | |
|-----------------|--------|
| A +/-0.001 [in] | 0.937 |
| B [in] | 2 3/4 |
| C [in] | 1 7/8 |
| D [in] | 1 9/16 |
| E +/-0.005 [in] | 2.375 |
| F +/-0.005 [in] | 1.250 |
| G [in] | 1 7/8 |
| J [in] | 5/16 |
| K [in] | 7/16 |
| H - Bolt | #8 |
| H - Hole [in] | 0.19 |

Weight

| | |
|-------------|-----|
| Weight [lb] | 0.5 |
|-------------|-----|

Performance Specifications

| | |
|---------------------------|-----|
| Dynamic Load Maximum [lb] | 398 |
| Dynamic Load Normal [lb] | 386 |
| Static Load Maximum [lb] | 312 |
| Static Load Normal [lb] | 279 |